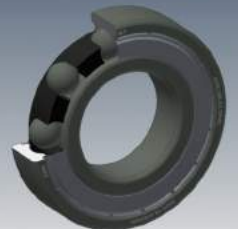
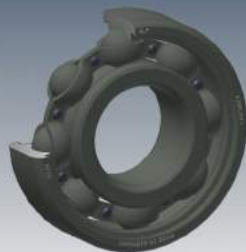


High temperature  
deep groove ball bearings  
Kiln truck bearings



SPINDEL- UND LAGERUNGSTECHNIK  
FRAUREUTH GMBH



### High temperature – deep groove ball bearings

The product range of company contains also high temperature deep groove ball bearings with designations HT1, HT2, and OFMC. These particular deep groove ball bearings, also designated as kiln truck bearings, are operated at temperatures up to +350°C.

In comparison to standard deep groove ball bearings, these bearings ensure a long operational lifetime at extremely high temperatures and low rotational speeds.

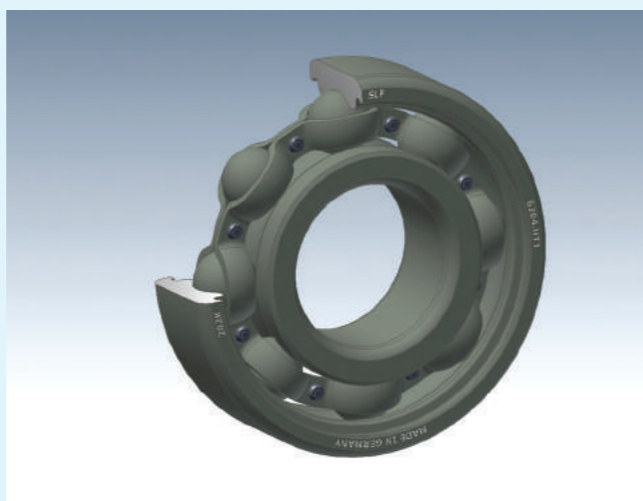


Fig: Deep groove ball bearing, manganese-phosphatised with sheet metal cage

### High temperature – deep groove ball bearings with suffix HT1, HT2, OFMC

The main dimensions correspond to that of the single-row deep groove ball bearings certified according to DIN 625 T.1

Outer and inner ring as well as balls and cage are manganese-phosphatised. This coating, which is certified in accordance with EN ISO 9717, ensures good protection against corrosion, good operating features and is a good holding primer for lubricants.

The radial bearing clearance is many times larger than C5 and serves to compensate deformations of the transport medium caused by temperature as well as running defects caused by dirt.

The accuracy of the bearing fulfils requirements standard to PN (normal tolerance) according to DIN 620 T.2.

High temperature - deep groove ball bearings with the HT1 and HT2 designations have a steel sheet cage and can be delivered with or without a cover disc made of steel sheet.

Ball bearings with the OFMC designation can be delivered with a graphite cage as well as with two cover discs made of steel sheet.

### Temperature application limits

Symbol	Lubrication
<b>HT1</b> (similar to HT1, SWC)	<b>High temperature - deep groove ball bearings</b> The bearing is filled with molybdenum disulfide (MoS <sub>2</sub> ) lubricant and can be operated at temperatures up to +350°C. Regular maintenance and re-lubrication is required
<b>HT2</b> (similar to HT2, SWC)	<b>High temperature- deep groove ball bearings</b> The bearing is filled with Turmotemp II/400 RS2 lubricant and can be operated at temperatures up to +270°C. A maintenance-free application period of 3 to 5 years is possible due to the ageing-stable and corrosion protection properties of the grease.
<b>OFMC</b> (similar to 2Z/VA228, SKF)	<b>High temperature - deep groove ball bearings</b> The bearing can be operated at temperatures up to +350°C. The cage with the suffix „G1” is made of electro-graphite. The graphite cage ensures maintenance-free operation.

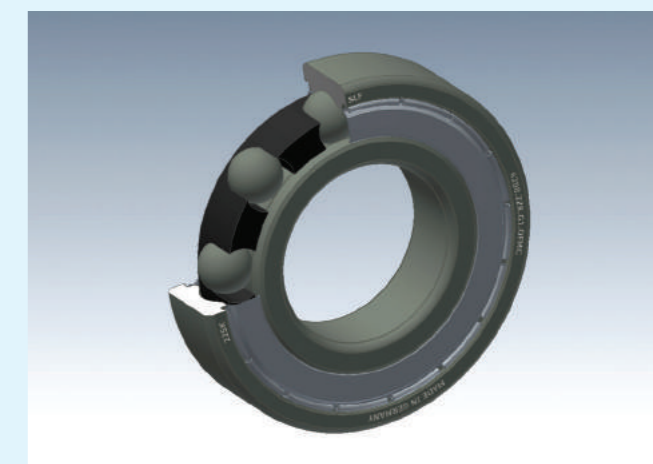


Fig: Deep groove ball bearing, manganese-phosphatised with a graphite cage and cover discs

**Order example:**  
High temperature - deep groove ball bearing 6005

- operation temperature up to +270°C
- double-sided cover discs
- tolerance class PN
- bearing clearance size C5

**6005. 2ZR. HT2**

**Order example:**  
High temperature - deep groove ball bearing 6208

- operation temperature up to +350°C
- double-sided cover discs
- electro-graphite cage
- tolerance class PN
- bearing clearance size C5

**6208. 2ZR. G1. OFMC**

Spindel- und Lagerungstechnik  
Fraureuth GmbH  
Fabrikgelände 5  
08427 Fraureuth/Saxony  
Germany

Phone: +49 / 37 61 / 8010  
Fax: +49 / 37 61 / 801-150

E-Mail: [slf@slf-fraureuth.de](mailto:slf@slf-fraureuth.de)  
Web: [www.slf-fraureuth.de](http://www.slf-fraureuth.de)



**Edition 01/2015**

No responsibility is accepted for the accuracy of this information.  
Changes due to technical improvements can be made without any advance notice.

General terms and conditions are individually stipulated between  
Spindel- und Lagerungstechnik Fraureuth GmbH and its customers.

**SPINDEL- UND LAGERUNGSTECHNIK  
FRAUREUTH GMBH**

